



Based in North West London DM Steelworks Ltd undertake structural steelwork & architectural metalwork detailing, manufacture and erection across the South East of England

Projects undertaken range from gates and railings up to multi-storey 200+ tonnes beam & column structures for residential, commercial and industrial applications.

Primary steelwork includes:

- Lattice Roof Buildings
- Portal Frame Buildings
- Braced Multi-Storey Buildings

Secondary Services include:

- Balustrades
- Stairs
- Walkways
- Gantries
- Ladders
- Barriers
- Fire Escapes
- Smoking Canopies
- Machine Platforms
- Restoration Work
- Balconies

RECENT PROJECTS INCLUDE



Carlow House - A wide range of services including glass balustrades, powder coated balustrades, staircases, structural walkways and planters.



Trocadero - Structural metalwork for building refurbishment to make ready for new hotel to be completed in 2017/8.

The New Fetal Medicine Centre - New build. Structural metalwork for building DM Steelwork carried out structural steelwork, staircases,



D.M. STEELWORKS LTD

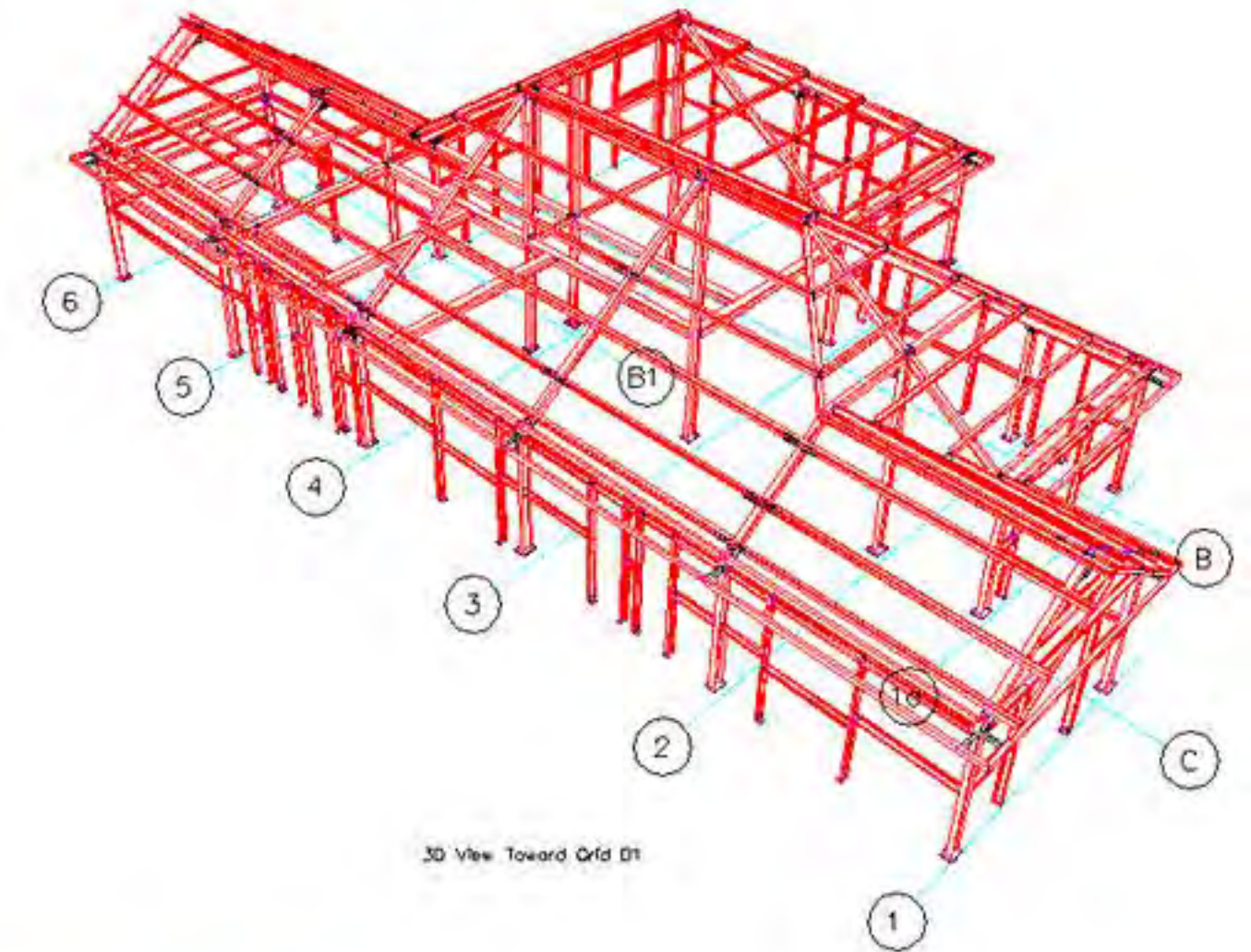
Tel: 020 8864 5364 - Fax: 020 8423 8887 - E-mail: sales@dmsteelworks.co.uk

CUSTOMERS INCLUDE



DETAILING

We offer full detailing services using the latest TEKLA software. This includes detailed plans, drawings and other documents for the manufacture and erection of steel members (columns, beams, braces, trusses, stairs, handrails, joists, metal decking, etc.) used in projects for the construction of buildings, mezzanine floors, stairways, and general secondary architectural metalwork. Working closely with architects, engineers, general contractors and steel fabricators we can handle the production and modification of all working drawings.



INSURANCE

We hold full insurance for all operating practices including:

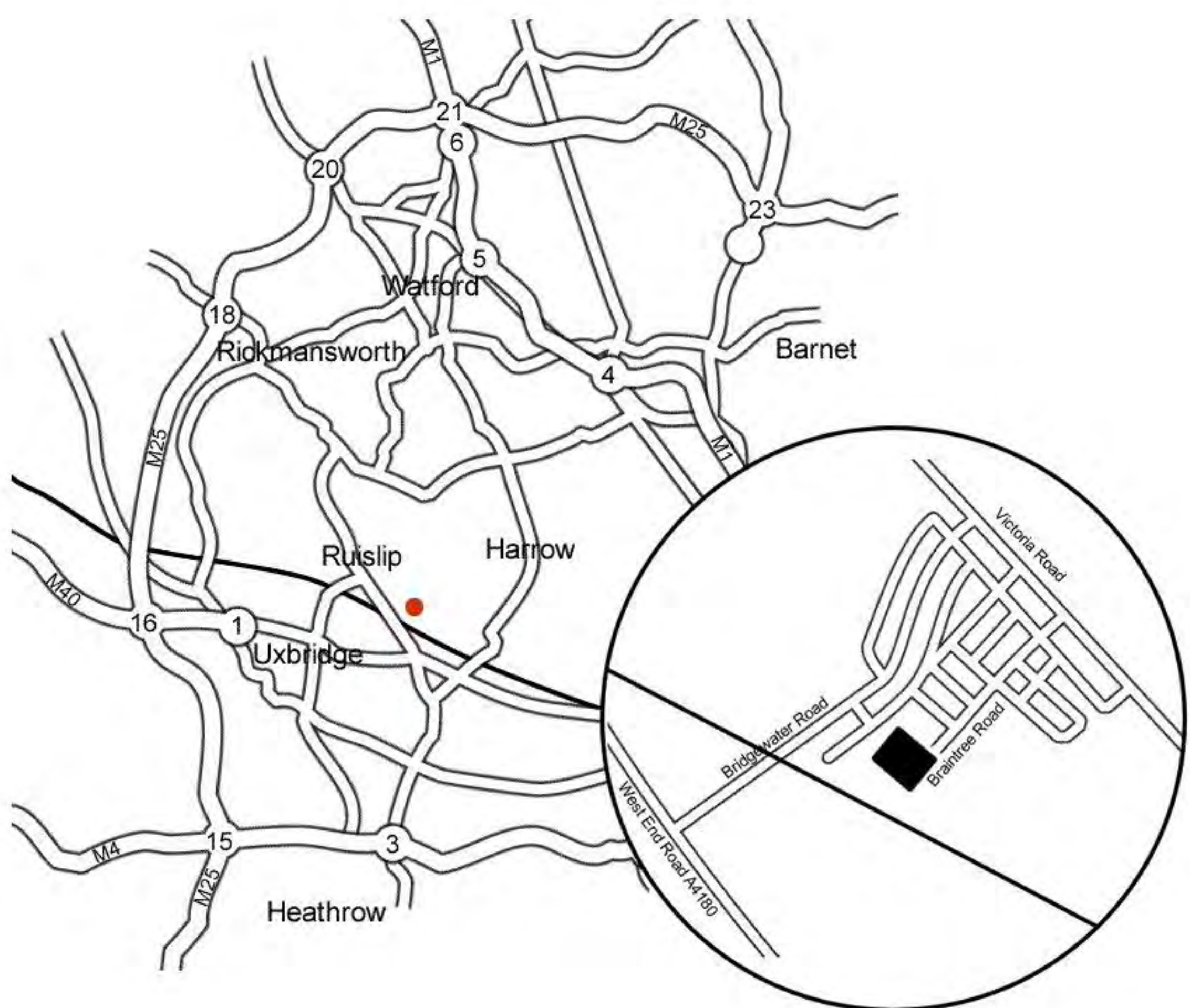
- Public & Product Liability - £10,000,000
- Employers Liability - £10,000,000
- PI Insurance - £5,000,000

METHOD STATEMENTS

We undertake full method statements for each job combining a list of existing and established method statements such as for the use of scissor lifts as well as project and location specific method statements.

HEALTH & SAFETY

The Health & Safety of our workers, our customers and the general public demands our total attention. Whether its in the workshop or on site, we conform to the tightest Health & Safety practices possible. All work is carried out in accordance with the Construction (Design and Management) Regulations 2007.



Don Mitchell Managing Director don@dmsteelworks.co.uk 07956 861447
Paul Walters Operations Director paul@dmsteelworks.co.uk 07931 901613

